

# TOTE BAG FOR EDMONTON!

Based on *Our Favourite Tote* pattern by Ruby Star Society for TrendTex Fabrics  
Test bags made by Jackie White



Going to *Quilt Canada 2024* in Edmonton? Whip up this roomy tote bag with extra-long handles to collect all your goodies in! We used cotton fabric from the *From Far and Wide* collection designed by Kate & Birdie Paper Co. for TrendTex Fabrics. Try both versions: one unlined and the other both quilted and lined. A beginner friendly project!



Jackie White Quilts  
[jackiewhitequilts.com](http://jackiewhitequilts.com)



**TrendTex**  
Fabric for every story.

## Fabric Requirements



Pond



Dark Teal



White

The following instructions are for Ruby Star's *Our Favourite Tote*, which requires  $\frac{3}{4}$  of a yard of one fabric.

See page 31 for instructions to make the quilted, lined version, which requires  $\frac{3}{4}$  of a yard of two fabrics, plus batting.

For an extra-heavy-duty bag, try using linen canvas fabric.

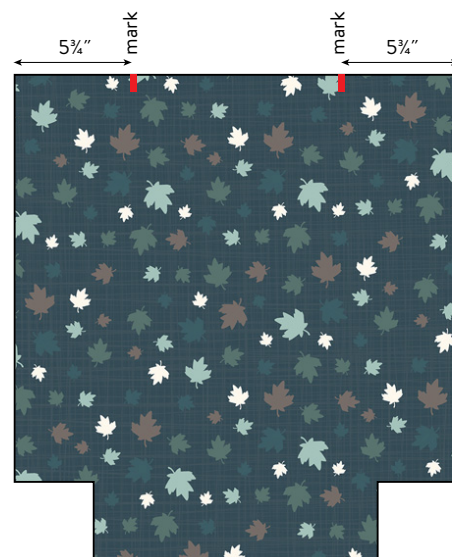
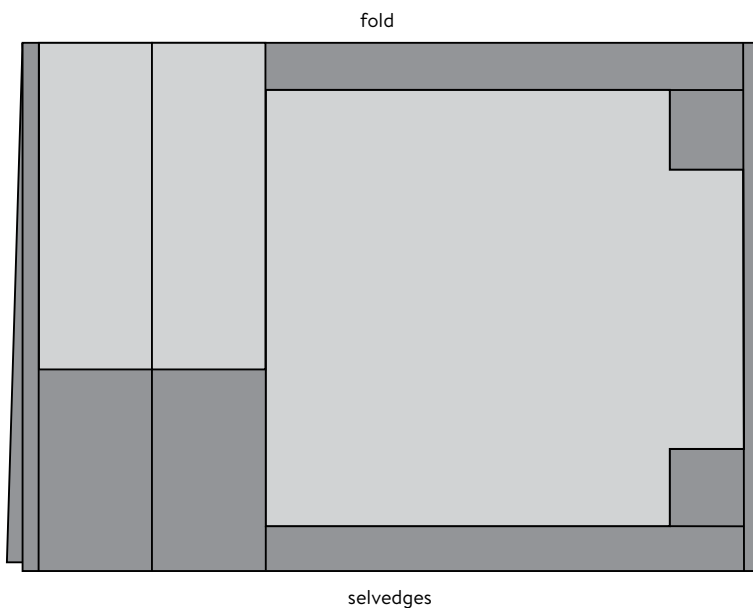
All seam allowances  $\frac{1}{2}$ " unless otherwise noted.

## Cutting Instructions

**FOR THE HANDLES** From yardage, cut (2)  $3\frac{3}{4}$ " WOF strips. Trim each strip to 28" long.

**FOR THE UNLINED TOTE** From remaining yardage, cut (1) 19" WOF strip. From strip, cut (2) rectangles 18" wide. Cut a 3" square out of the bottom of both bottom corners on both pieces. Make small marks along top edges  $5\frac{3}{4}$ " in from each side edge.

**FOR THE QUILTED, LINED TOTE** Cut (2) rectangles 18" wide for lining and batting. Cut a 3" square out of the bottom of both bottom corners on both pieces. Make small marks along top edges of lining  $5\frac{3}{4}$ " in from each side edge. >

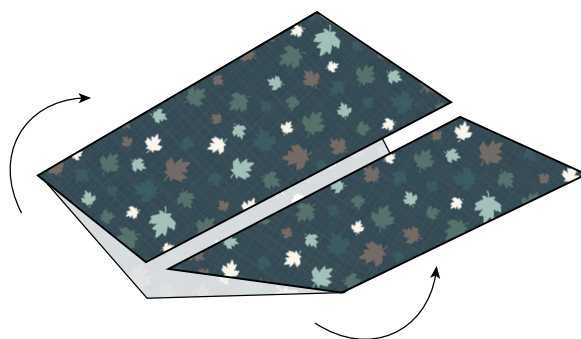


# Assembly Instructions

## STRAPS

Fold straps in half lengthwise with wrong sides together and press to crease. Unfold. Fold each long raw edge in almost to first crease, wrong sides together, and press edge to crease. Refold all creases and press flat. Strap should be about 1" wide.

Topstitch along both edges  $\frac{1}{8}$ " from edge.



## UNLINED TOTE

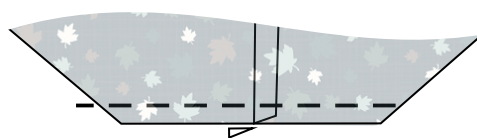
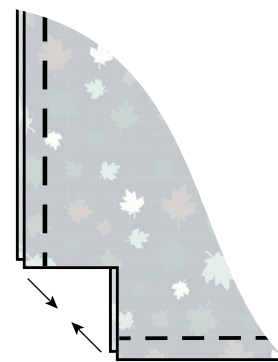
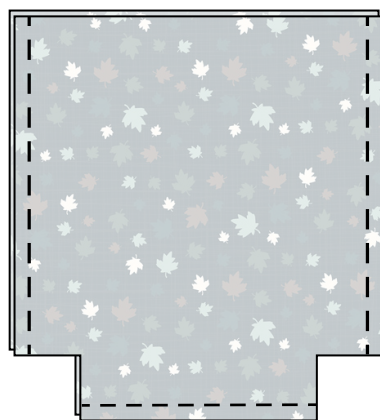
**1** On both bag pieces, fold top edge  $\frac{1}{2}$ " towards wrong side and press. Fold another 1" and press again. Unfold all folds.

**2** Place main bag pieces right sides together. Stitch together along sides and bottom edges. Finish seam allowance with a zig zag stitch or serger.

**3** On both bottom corners, bring side seam and bottom seam allowances together, lining them up, so that seams are right sides together. It helps to finger press the seam allowances in opposite directions so that the seams nest. Align the raw fabric edges and stitch together. Finish seam allowance with a zig zag stitch or serger.

**4** On each side of bag, pin strap to top edge with strap ends centered over marks and raw edges aligned. Be sure that the strap is not twisted. Stitch across strap ends at  $\frac{1}{4}$ " to secure.

**5** Fold top of bag along previously pressed creases, folding raw edge of strap under with raw edge of bag. Pin in place all the way around, pinning straps so that they are straight and sticking up away from bag.



**6** Stitch all the way around  $\frac{1}{8}$ " away from inner lower folded edge, back-stitching at beginning and end. Stitch all the way around again, this time  $\frac{1}{8}$ " from top edge of bag, making sure straps stay straight when you sew over them.

For extra durability, stitch a square and X over the end of each strap, within the two hem stitching lines.

You did it! You made Ruby Star's Favourite Tote!



## QUILTED, LINED TOTE

**1** Place batting on wrong side of main bag and pin to each side. Quilt as you wish.

**2** Place main bag pieces right sides together. Stitch together along sides and bottom edges.

**3** Repeat for lining, except leave a 5" hole in bottom edge that will be used for turning the bag right side out.

**4** On both bottom corners, bring side seam and bottom seam allowances together, lining them up, so that seams are right sides together. It helps to finger press the seam allowances in opposite directions so that the seams nest. Align the raw fabric edges and stitch together.

**5** Repeat for lining.

**6** With the lining wrong side out and the main bag right side out, place the main bag inside the lining so that right sides are facing.

**7** Using the strap markings, place the straps between the lining and main bag, and bring edge of straps to markings and pin. The straps should be pinned between the two bags.

**8** Sew along the raw edge using a  $\frac{1}{2}$ " seam allowance all the way around the top of the bag.

**9** Flip the bag right sides out and sew  $\frac{1}{4}$ " top stitch along top of bag.

**10** Sew the hole in bottom of lining closed. ✨



Now you're ready to fill up those totes with lots of fun finds at **Quilt Canada!**