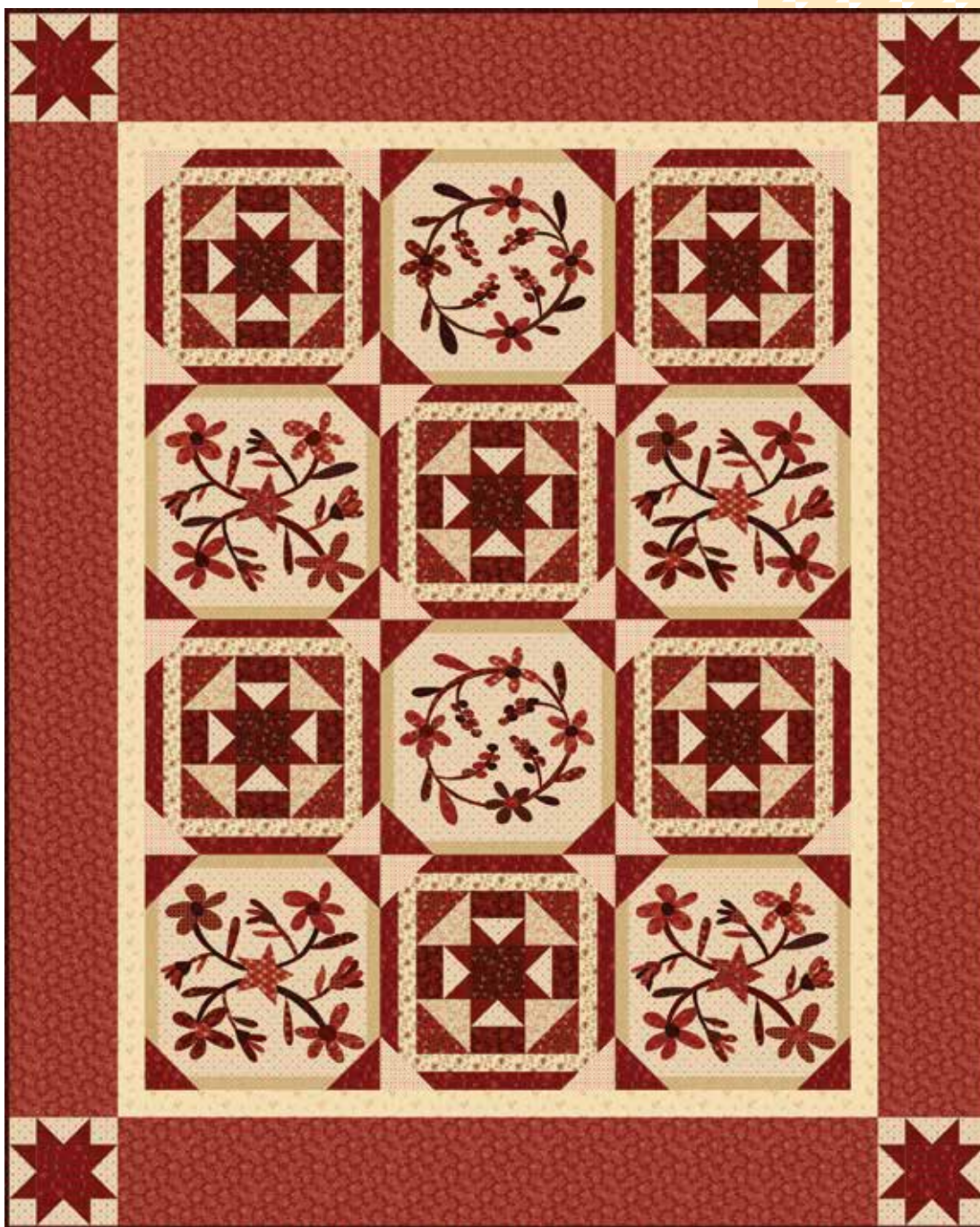


BERRIES & BLOSSOMS

by **Janet Nesbitt** of **One Sister Designs**
Quilt Design by **Heidi Pridemore**
Pattern supplied by **Suz-q Textiles**
Published with permission from **Henry Glass**



Finished size: 26" x 33"

Materials

Fabric numbers listed are from the One Sister Yarn Dyes and Linen Closet Collections.

0.95 metre*	1 yard	Appliqué Panel – Cream	A	8832P-44
0.65 metre	¾ yard	Bow Tie Foulard – Tan	B	8567-33
0.75 metre	¾ yard	Alphabet – Red	C	8833-88
0.25 metre	¼ yard	Heart Flower Vine – Dark Red	D	8835-89
0.5 metre	½ yard	Window Pane Plaid – Red	E	8556Y-88
0.4 metre	¾ yard	Diamond Geo – Cream	F	8836-44
0.25 metre	¼ yard	Flower Toss – Red	G	8834-88
0.25 metre	¼ yard	Flower Toss – Cream	H	8834-44
0.25 metre	¼ yard	Heart Flower Vine – Red	I	8835-88
0.5 metre	½ yard	Heart Flower Vine – Cream	J	8835-44
0.25 metre	¼ yard	Star Check – Cream	K	8838-44
0.4 metre	¾ yard	Tossed Flowers – Cream	L	8568-44
1.2 metre	1¼ yards	Flower Toss – Rose	M	8834-22
0.6 metre**	¾ yard	Alphabet – Dark Red	N	8833-89
3.3 metre	3½ yards	Star Strands – Cream for backing	O	8837-44

*When purchasing this panel, make sure you buy enough fabric to have three (3) wreath blocks and three (3) star flower blocks.

**Includes binding.

Cutting Instructions

Please note: all strips are cut across width of fabric (WOF) from selvage to selvage edge unless otherwise noted.

From the Appliqué Panel – Cream (A), fussy cut:

- (6) 12" blocks. Three (3) wreath and three (3) star flower blocks.

From the Bow Tie Foulard – Tan (B), cut:

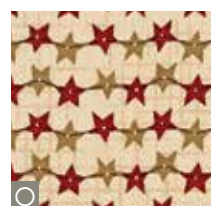
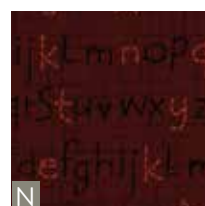
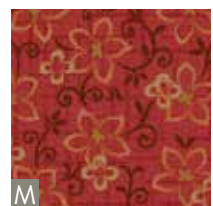
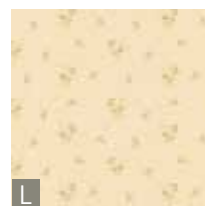
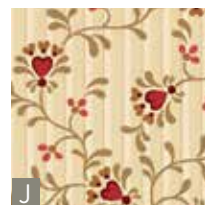
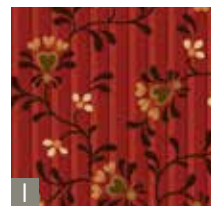
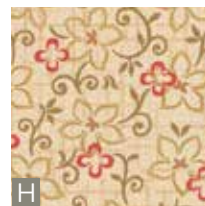
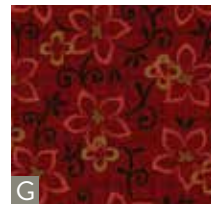
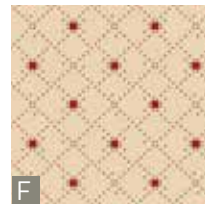
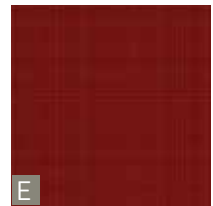
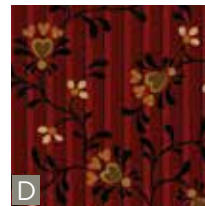
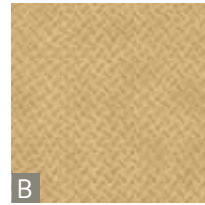
- (4) 2" x WOF strips. Sub-cut (12) 2" x 12" strips.
- (6) 2" x WOF strips. Sub-cut (12) 2" x 15" strips.

From the Alphabet – Red (C), cut:

- (4) 1½" x WOF strips. Sub-cut (12) 1½" x 13½" strips.
- (4) 1½" x WOF strips. Sub-cut (12) 1½" x 11½" strips.
- (2) 3½" x WOF strips. Sub-cut (24) 3½" squares.

From the Heart Flower Vine – Dark Red (D), cut:

- (1) 3½" x WOF strip. Sub-cut (6) 3½" squares. >



From the Window Pane Plaid – Red (E), cut:

- (1) 3½" x WOF strip. Sub-cut (4) 3½" squares.
- (4) 2" x WOF strips. Sub-cut (80) 2" squares.

From the Diamond Geo – Cream (F), cut:

- (4) 2" x WOF strips. Sub-cut (40) 2" x 3½" strips.
- (1) 2" x WOF strips. Sub-cut (16) 2" squares.

From the Flower Toss – Red (G), cut:

- (2) 2" x WOF strips. Sub-cut (24) 2" x 3½" strips.

From the Flower Toss – Cream (H), cut:

- (1) 3⅜" x WOF strip. Sub-cut (12) 3⅜" squares.

From the Heart Flower Vine – Red (I), cut:

- (1) 3⅜" x WOF strip. Sub-cut (12) 3⅜" squares.

From the Heart Flower Vine – Cream (J), cut:

- (4) 1½" x WOF strips. Sub-cut (12) 1½" x 11½" strips.
- (3) 1½" x WOF strips. Sub-cut (12) 1½" x 9½" strips.

From the Star Check – Cream (K), cut:

- (2) 3½" x WOF strips. Sub-cut (24) 3½" squares.

From the Tossed Flowers – Cream (L), cut:

- (3) 2" x WOF strips. Sew strips together, end to end, with diagonal seams. Then cut (2) 2" x 52½" strips.
- (2) 2" x 42½" WOF strips, piece as needed.

From the Flower Toss – Rose (M), cut:

- (3) 6½" x WOF strips. Sew strips together, end to end, with diagonal seams and cut (2) 6½" x 55½" strips.
- (2) 6½" x 42½" WOF strips, piece as needed.

From the Alphabet – Dark Red (N), cut:

- (7) 2½" x WOF strips for the binding.

From the Star Strands – Cream for Backing (O), cut:

- (2) 62" x WOF strips for backing. Sew strips together, trim to make 62" x 75" backing.

Sewing Instructions

Note: RST is right sides together.

1 Place (1) 3⅜" fabric **H** square on top of (1) 3⅜" fabric **I** square, RST. Draw line across diagonal of top square (fig. 1). Sew ¼" away from each side of drawn diagonal line (fig. 1). Cut two squares apart on drawn diagonal line (fig. 2) to make two half-square triangles. Trim blocks to measure 3" square to make (2) unit 1 squares (fig. 3). Repeat to make (24) unit 1 squares total.

2 Place (1) 2" fabric **E** square on left side of (1) 2" x 3½" fabric **F** strip, RST (fig. 4). Sew across diagonal of square from upper right corner to lower left corner (fig. 4). Flip open triangle formed and press (fig. 5). Trim away excess fabric from behind triangle, leaving ¼" seam allowance.

3 Place another 2" fabric **E** square on right side of 2" x 3½" fabric **F** strip, RST (fig. 6). Sew across diagonal of square from upper left corner to lower right corner (fig. 6). Flip open triangle formed and press. Trim away excess fabric from behind triangle, leaving a ¼" seam allowance to make (1) unit 2 strip (fig. 7).

4 Repeat steps two to three to make (40) unit 2 strips total.

5 Sew (1) 2" x 3½" fabric **G** strip to bottom of (1) unit 2 strip, lengthwise, to make (1) unit 3 block (fig. 8). Repeat to make (24) unit 3 blocks total.

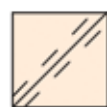


Fig. 1



Fig. 2



Fig. 3



Fig. 4



Fig. 5



Fig. 6



Fig. 7

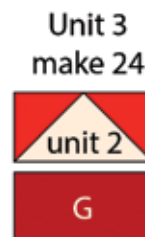


Fig. 8

6 Sew (1) unit 3 block to each side of (1) $3\frac{1}{2}$ " fabric **D** square. Sew (1) unit 1 square to each side of (1) unit 3 block. Repeat to make second strip. Sew the strips to top and bottom of fabric **D** square to make (1) unit 4 block (fig. 9). Repeat to make (6) unit 4 blocks total.

7 Sew (1) $1\frac{1}{2}$ " x $9\frac{1}{2}$ " fabric **J** strip to each side of (1) unit 4 block. Sew (1) $1\frac{1}{2}$ " x $11\frac{1}{2}$ " fabric **J** strip to top and bottom of unit 4 block to make (1) Unit 5 block (fig. 10). Repeat to make (6) unit 5 blocks total.

8 Sew (1) $1\frac{1}{2}$ " x $11\frac{1}{2}$ " fabric **C** strip to each side of (1) unit 5 block. Sew (1) $1\frac{1}{2}$ " x $13\frac{1}{2}$ " fabric **C** strip to top and to bottom of unit 5 block to make (1) unit 6 block (fig. 11). Repeat to make (6) unit 6 blocks total.

9 Place (1) $3\frac{1}{2}$ " fabric **K** square on top left corner of (1) unit 6 block, RST (fig. 12). Sew across diagonal of smaller square from upper right corner to lower left corner (fig. 12). Flip open triangle formed and press (fig. 13). Trim away excess fabric from behind triangle $\frac{1}{4}$ " away from sewn seam.

10 Follow figure 14 for seam direction to add $3\frac{1}{2}$ " fabric **K** square to each of remaining corners of Unit 6 block to make (1) block one (fig. 15).

11 Repeat Steps nine to ten to make (6) block ones total. >

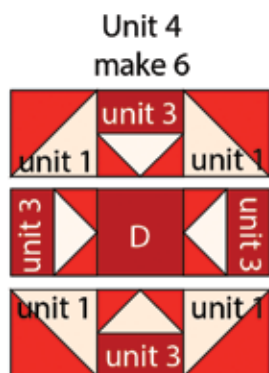


Fig. 9

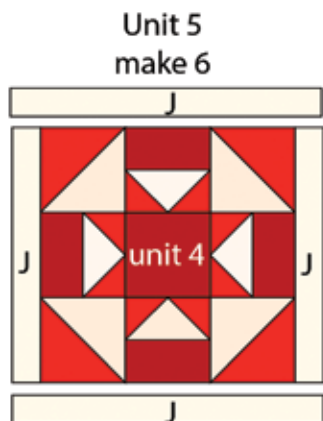


Fig. 10

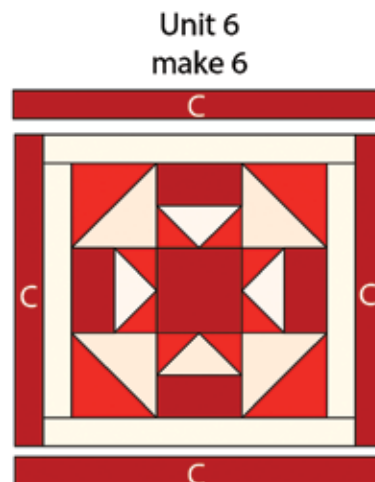


Fig. 11

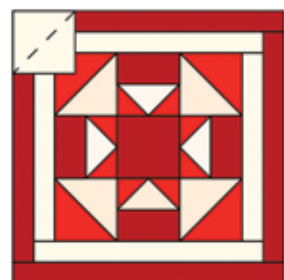


Fig. 12



Fig. 13

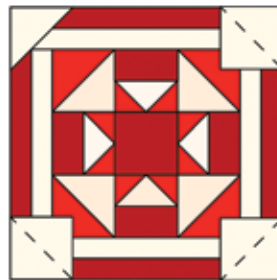


Fig. 14

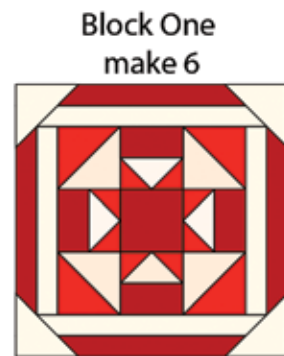


Fig. 15

12 Sew (1) 2" x 12" fabric **B** strip to each side of (1) 12" fabric **A** block. Sew (1) 2" x 15" fabric **B** strip to top and bottom of fabric **A** block. Trim block to measure 13½" square to make (1) unit 7 block (fig. 16). Repeat to make (6) unit 7 blocks total.

13 Repeat steps nine to ten using (24) 3½" fabric **C** squares and (6) unit 7 blocks to make (6) block twos (fig. 17).

14 Sew (1) unit 2 strip to each side of (1) 3½" fabric **E** square. Sew (1) 2" fabric **F** square to each end of (1) unit 2 strip. Repeat to make second strip. Sew strips to top and bottom of fabric **E** square to make (1) block three (fig. 18). Repeat to make (4) block threes, total.

Quilt Top Assembly

Note: Refer to Quilt Layout while assembling.

15 Sew (1) block one to each side of (1) block two to make row one. Repeat to make row three.

16 Sew (1) block two to each side of (1) block one to make row two. Repeat to make row four.

17 Sew (4) rows together in numerical order to make centre of quilt top.

18 Sew (1) 2" x 52½" fabric **L** strip to each side of centre block. Sew (1) 2" x 42½" fabric **L** strip to top and bottom of centre block.

19 Sew (1) 6½" x 55½" fabric **M** strip to each side of centre block. Sew (1) block three to each end of (1) 6½" x 42½" fabric **M** strip. Repeat to make second strip. Sew strips to top and bottom of centre block to make quilt top.

20 Layer and quilt as desired.

21 Sew (7) 2½" x WOF fabric **N** strips together, end to end, with 45° seams, to make binding. Fold long strip in half, lengthwise, with wrong sides together and press.

22 Bind as desired. ♦

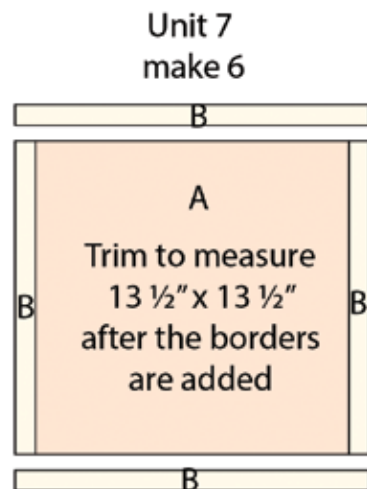


Fig. 16

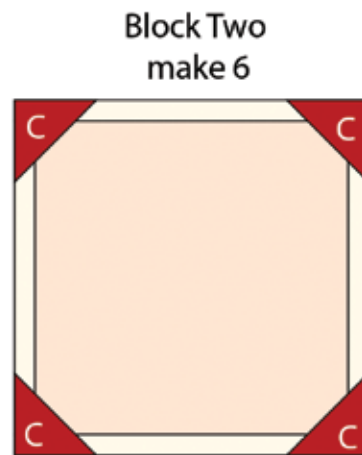
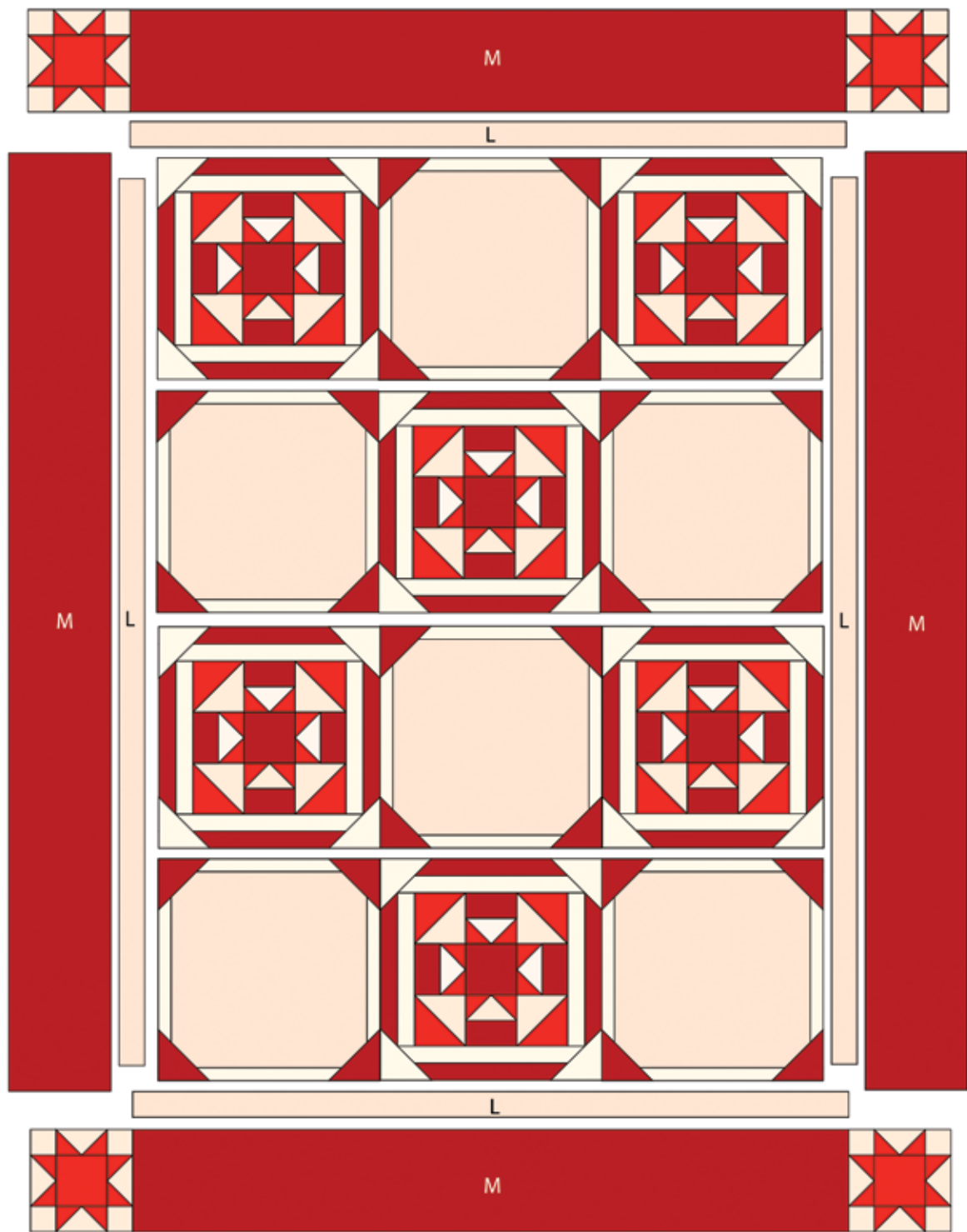


Fig. 17



Fig. 18



Quilt Layout

TEXTILES
Suzi-q
 FOUNDED IN 1990

